

MENU

Work management. Built for the enterprise.

WORK MANAGEMENT

 Some features
  All features
  Included
  Not included

	Pro	Business	Enterprise
Work Management			
Plan & assign work	✓	✓	✓
Project templates	✓	✓	✓
Programs & portfolios	✓	✓	✓
Timesheets	✓	✓	✓
Enhanced analytics	✗	✓	✓
Demand Management			
Request queues with auto-routing	✓	✓	✓
Custom forms & logic	✓	✓	✓
Automated approvals on request	✓	✓	✓
Strategic Portfolio Planning			
Business case	✓	✓	✓
Alignment scorecards	✗	✓	✓
Portfolio Optimizer	✗	✓	✓
Resource Management			
AI-enabled team scheduling	✓	✓	✓
AI-enabled project scheduling	✓	✓	✓
AI-enabled global resource scheduling	✓	✓	✓
Resource planning	✓	✓	✓
Asset Review & Approval			
Document review & comment	✓	✓	✓
Ad hoc approvals	✓	✓	✓
Premium digital content review—review, annotate, & approve over 150 file types	✓	✓	✓
Interactive media review	✓	✓	✓
Auto-compare	✓	✓	✓
Interactive website review	✓	✓	✓
Desktop proofing viewer	✓	✓	✓
Interactive content review	✓	✓	✓
Unlimited proofs	✓	✓	✓
Reporting			
Dashboards	✓	✓	✓
Unlimited project, task, hour, issue, user, and timesheet reports	✓	✓	✓
Unlimited custom reporting for over 50 workflow elements	✓	✓	✓
Utilization report	✓	✓	✓
Worker Experience			
Workfront Home	✓	✓	✓
Mobile apps (iOS, Android)	✓	✓	✓
Team Agile views	✓	✓	✓
Project Agile views	✓	✓	✓
Document storage integrations	✓	✓	✓
Productivity app integrations	✓	✓	✓

Work management. Built for the enterprise.

ADD-ON PRODUCTS

\$ Additional Cost ✓ Included ✗ Not included

	Pro	Business	Enterprise
Workfront Goals	\$	\$	\$
Scenario Planner	✗	\$	\$
Workfront Fusion	\$	\$	\$

INTEGRATIONS

\$ Additional Cost ✓ Included ✗ Not included

	Pro	Business	Enterprise
Slack	✓	✓	✓
Zoom	✓	✓	✓
Jira	✓	✓	✓
Salesforce	✓	✓	✓
Google Drive	✓	✓	✓
Google Team Drive	✓	✓	✓
Dropbox	✓	✓	✓
Box	✓	✓	✓
WebDAM	✓	✓	✓
SharePoint	✓	✓	✓
Adobe Experience Manager	✓	✓	✓
Adobe Creative Cloud	✓	✓	✓
Microsoft Teams	✓	✓	✓
Microsoft One Drive	✓	✓	✓
Microsoft Outlook	✓	✓	✓
Microsoft Outlook Calendar	✓	✓	✓
Document webhooks	✓	✓	✓
REST API access	1500/ license/ 24 hrs	3000/ license/ 24 hrs	unlimited
Event subscription	✗	3000/ license/ 24 hrs	unlimited

Work management. Built for the enterprise.

ENTERPRISE MANAGEMENT

🕒 Some features
● All features
✓ Included
✗ Not included

	Pro	Business	Enterprise
Security & Compliance	🕒	🕒	●
Encryption at rest	✓	✓	✓
Single sign-on	✓	✓	✓
Audit rights	✗	✗	✓
Allowlist IP	✗	✗	✓
Enterprise Administration & Storage	🕒	●	●
Data storage per user	15GB	30GB	60GB
Preview sandbox	✓	✓	✓
Custom refresh sandbox	✗	1	2
Group administrator	✓	✓	✓
Group license management	✗	✓	✓
Customization	●	●	●
Branding	✓	✓	✓
Terminology	✓	✓	✓
Proofing viewer	✓	✓	✓
Proofing email branding	✓	✓	✓
Collaboration	●	●	●
Unlimited requestors	✓	✓	✓
Unlimited work reviewers	✓	✓	✓
Unlimited reporting viewers	✓	✓	✓
Education & Support	🕒	●	●
Access to LMS	✓	✓	✓
Support level	Standard	Premium	Premium
Support hours	12x5	24x7x365	24x7x365
Allotted authorized support contacts	2	5+	5+
Initial response time	4 hours	1 hour	1 hour
Contact methods	Webform+Phone	Webform+Phone	Webform+Phone
On-demand case escalation	✗	✓	✓
Assigned Support Engineer	See Workfront Add-Ons	See Workfront Add-Ons	See Workfront Add-Ons
Business Units	●	●	●
Ideal for up to	1 dept	10 depts	Enterprise-wide

Work management. Built for the enterprise.

FREQUENTLY ASKED QUESTIONS

How many users are supported in each plan?

Our plans support your company and processes. You can purchase any number of licenses within each plan based on your needs. Some plans do have a minimum number of licenses required for purchase. Contact us for more information and we can talk through your specific needs.

Can I add to or change my plan after purchasing?

Absolutely. Many customers start in one plan and quickly move to another with more functionality. We recommend starting with the plan that supports all of your needs and then we can grow and expand as necessary.

Does Workfront service international companies?

We help many international companies with our 24/7 service and support. Our offices in England support our international clients and will be happy to assist you with any questions.

Work management. Built for the enterprise.

SECURITY

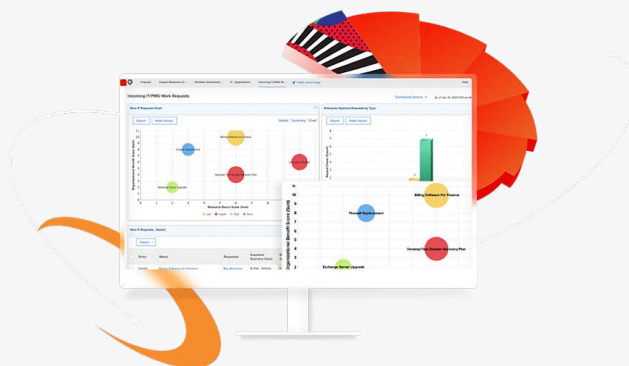
The industry's highest security and privacy tools are built into Workfront project management software so you know your data—and your customer's data—are protected.

[Explore >](#)

SERVICES & SUPPORT

We understand your business and challenges. That's why Adobe Workfront is with you from the very beginning and here to support you as you grow.

[Explore >](#)



BENEFITS

Workfront is an enterprise work management application that makes it easier for your teams to strategically plan, manage, collaborate, and deliver their best work and better business outcomes.

[Dig deeper >](#)



© 2022 Adobe. All rights reserved.

Adobe, the Adobe logo, and Workfront, an Adobe company logo are either registered trademarks or trademarks of Adobe in the United States and/or other countries.